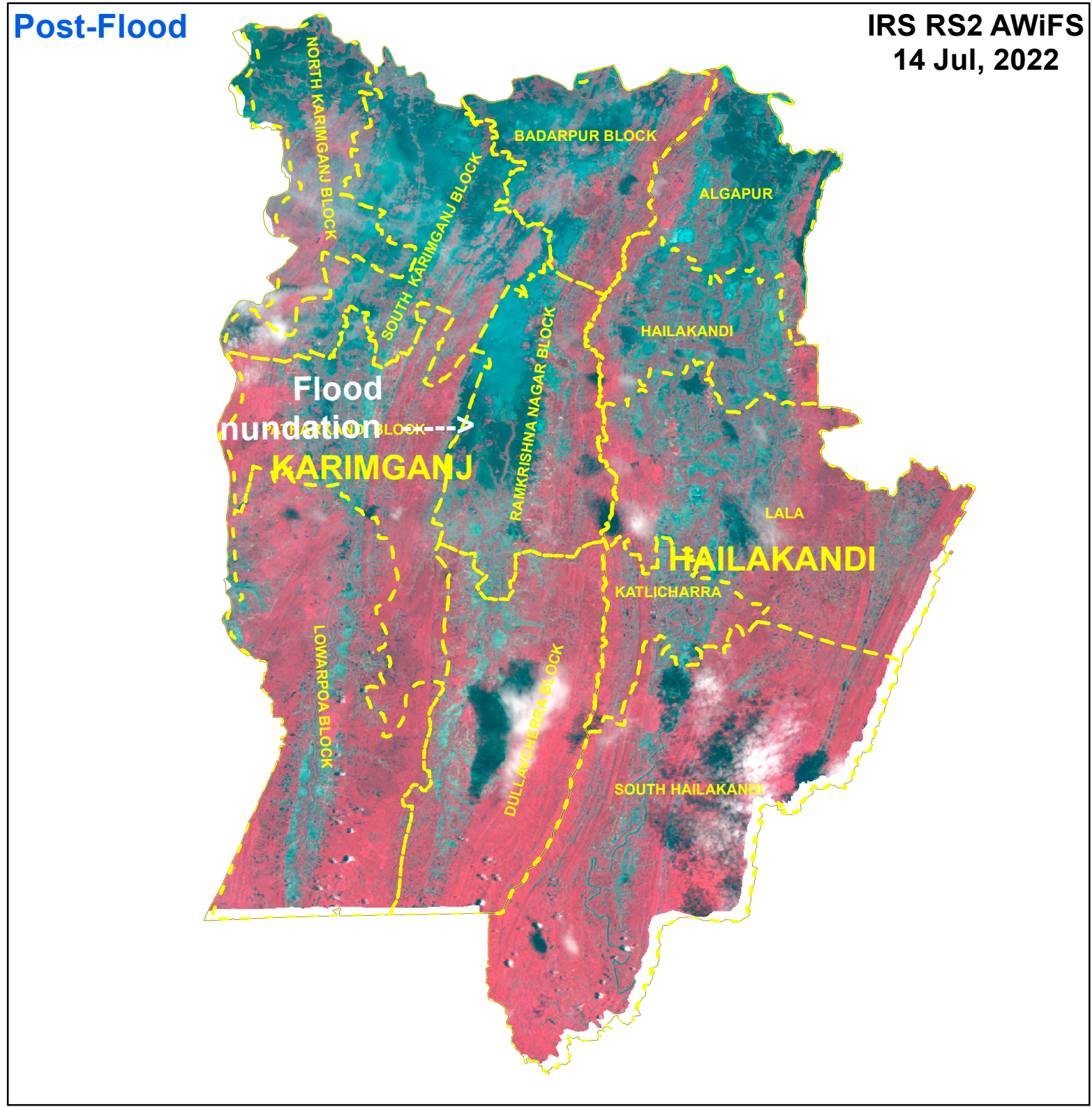
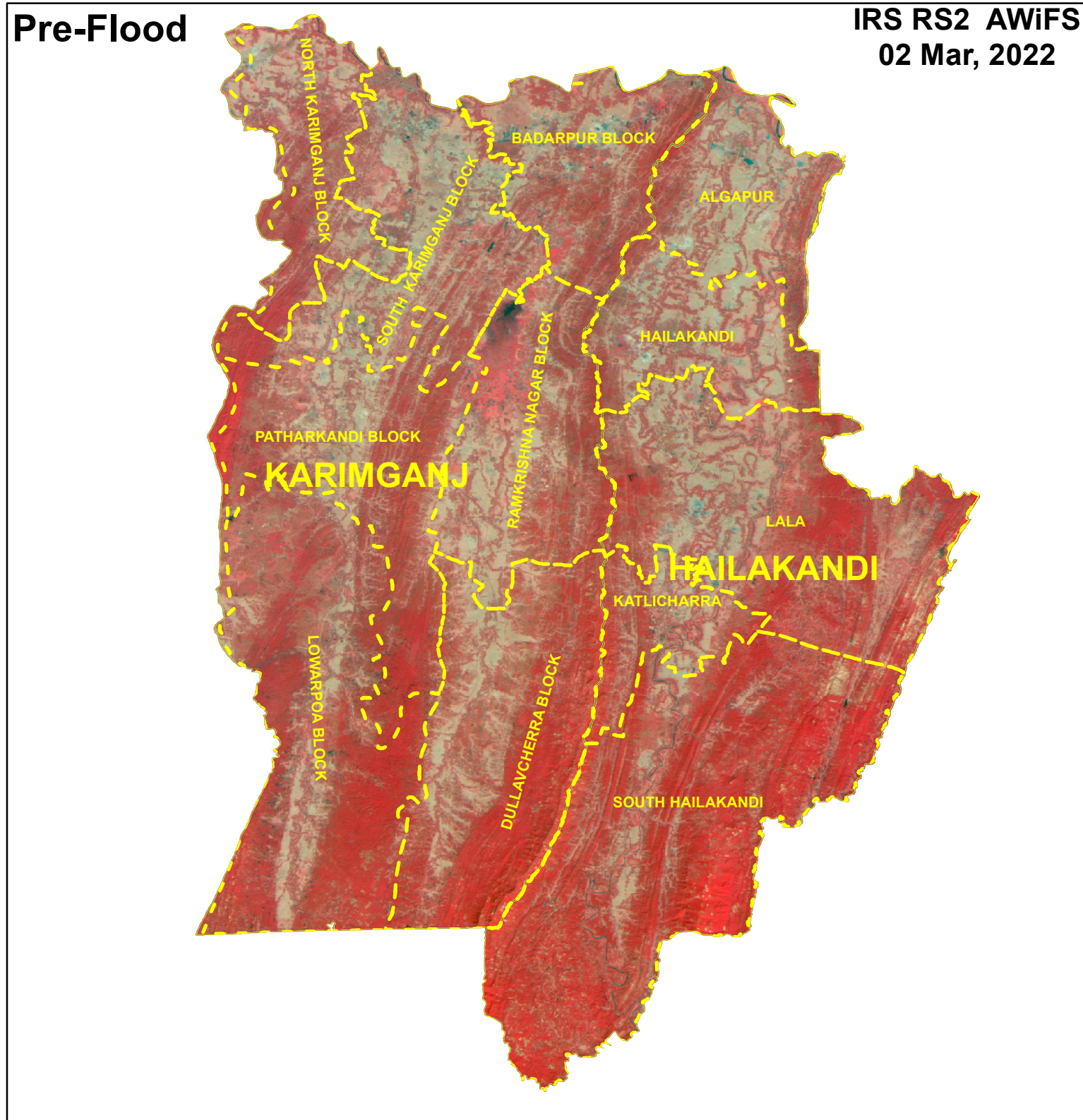
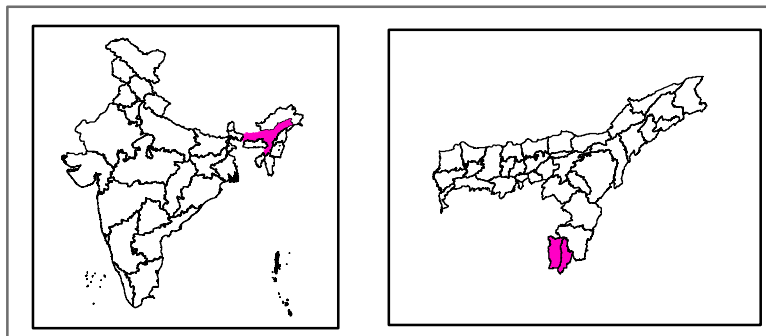


Flood Inundation in parts of Karimganj and Hailakandi Districts, Assam State

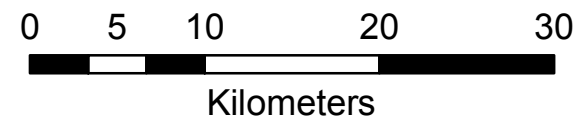
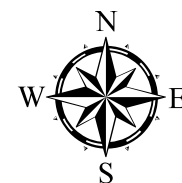


Location Map



This Map shows the overview of the flood inundated areas captured by IRS Satellites.

Taluk boundaries for the respective districts are overlaid



Disaster Management Support Group
National Remote Sensing Centre, ISRO
Dept. of Space, Govt. of India
Hyderabad- 500 037
E-Mail: flood@nrsc.gov.in
www.nrsc.gov.in